



CHÂTEAU LIBEREC

LIBEREC

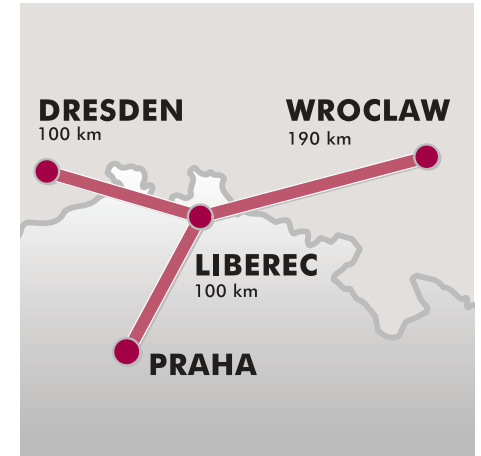
THE CITY OF LIBEREC IS LOCATED IN THE HEART OF NORTH BOHEMIA, CLOSE TO THE BORDERS WITH POLAND AND GERMANY. IT IS THE ADMINISTRATIVE AND ECONOMICAL CENTRE OF THE REGION AND A HOTSPOT FOR FOREIGN INVESTORS. BESIDES THIS, THE CITY HAS MUCH TO OFFER TO TOURISTS FROM ITS RICH PAST, AS WELL AS MODERN ATTRACTIONS AND BEAUTIFUL NATURE.

GENERAL INFORMATION

Liberec is a regional centre of northern Bohemia. It is also known under the German name Reichenberg. The city has a total number of 100.000 inhabitants. The city is located in the north of the Czech Republic near the borders with Poland and Germany. Its accessibility is favourable because of nearby highways to Dresden and Prague. It takes approximately one hour to travel from Prague to Liberec by car. A descendent from Liberec is Ferdinand Porsche who became famous for designing the Volkswagen beetle.

ECONOMICAL

Liberec is a vibrant economical centre with growth potential. Traditionally, Liberec was dominated by the textile industry. In the nineteenth century, the local ruler baron Liebig invested heavily in textile machinery in Liberec. Nowadays, the automotive and electro technical industries are expanding, which is due to the entry of foreign firms into the region. The newly developed industrial zones in the areas Mladá and Ralsko accommodate many new businesses, mainly automotive firms. The economical development is supported by an high overall education level. Industrial activities can



rely on specialised education institutions. The most significant is the Technical University of Liberec (VUTS Liberec). The university has its own research centre which participates in R&D projects. The technology park of VUTS Liberec will attract new high-tech businesses in the upcoming years.

LEISURE AND TOURISM

The region northern Bohemia offers great variety of tourist attractions. First of all, tourists have the possibility to visit medieval castles such as Frydlant and Grabstejn. These castles are situated in rural areas in the vicinity of Liberec. Other tourist attractions that are worthwhile visiting are the new-renaissance town hall, the Bozkov dolomite caves, the TV tower and city zoo. The TV tower is a unique building which includes a hotel.

During the communist regime in 1968, Vacláv Havel held a famous speech from this location and it is now regarded as a national monument. The city zoo is the oldest in the Czech Republic and is specialised in precious and threatened species of animals. The zoo participates in breeding programs to preserve rare species, for example white tigers.

SPORTS

The Bohemian mountains have an excellent reputation for various sports. Liberec is located near the national park Jizerské Hory. The mountains in the national park are suited for hiking, biking and also camping. In winter, the mountain slopes are used for skiing. In 2009, the world FIS Nordic World Ski championships will be organised in Liberec.

After sightseeing, sports or business, the Liberec region offers many leisure facilities, like spas, which will complement your stay.



BUILDING HISTORY

OF CHÂTEAU LIBEREC

- 1538 Jáchym of Bibrštejn purchased the family estate on the site of Liberec Chateau from Liberec burgher Anton Plischký. The family estate was converted into an aristocratic court.
- 1565 The aristocratic manor was converted for the governor, becoming the foundation for the present-day chateau.
- 1583-87 Construction of the original Redern Wing.
- 1604 Construction of the chapel on the north side at the instigation of Kateřina of Redern. The building work was probably performed by Jan Arkon of Žitava. At the same time the tower was built, connected by a wall to the former fortifications and serving as a bell tower and bastion.
- 1609 Construction of the Nostic Wing.
- 1615 Fire in the chateau. Redern Wing destroyed. Redern Wing reconstructed and built one floor higher.
- 1773-76 Construction of the Garden Wing following a design by Josef Kunz.



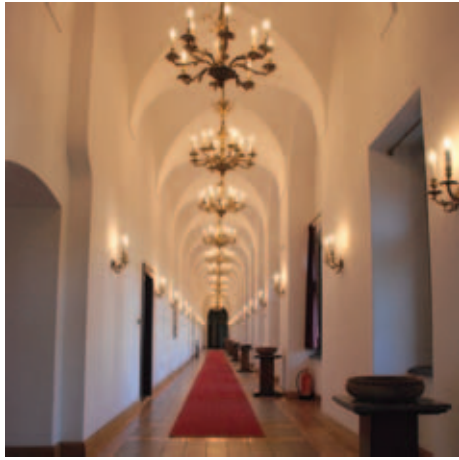
- | | |
|--|--|
| <p>1785-86 Conversion of the Redern Wing in Classicist style. The reconstruction work was probably performed by the architect Josef Kunz. New roofing with a mansard roof. Enclosure of the château opened up. Construction of a small house for the castle warden.</p> <p>1787 Courtyard built in front of the Nostic Wing. Establishment of 8. března Street.</p> <p>1852-54 Conversion of the Garden Wing in Historicist Romanticist style. Square tower built between the Nostic Wing and the Garden Wing.</p> <p>1850 District Court set up in the Redern Wing.</p> <p>1875-85 Palach and Rumunská streets laid. Street below bell tower and chapel lowered by one floor. Stone plinth built. The original entrance was now one floor above the ground and thus was closed.</p> | <p>1927 Garden Wing converted into a hotel run by the château administration. Stucco decorations destroyed.</p> <p>1933 Head Office of State Forestry and Land Management.</p> <p>1936 Dairy of state farm in Zákupy.</p> <p>1938-45 Garrison command and German work duty.</p> <p>1945 Head Office of State Forestry and Land Management.</p> <p>1950-80 Redern Wing used by the Technical University.</p> <p>1950 Open-air cinema built in the eastern part of the château garden. Open-air cinema in the garden.</p> <p>1964-69 General reconstruction of the chapel. Entire roof replaced, including tower.</p> <p>1986-1990 Comprehensive reconstruction of entire château by Skloexport into a glass showroom.</p> |
|--|--|



EXTERIORS
OF CHÂTEAU LIBREC



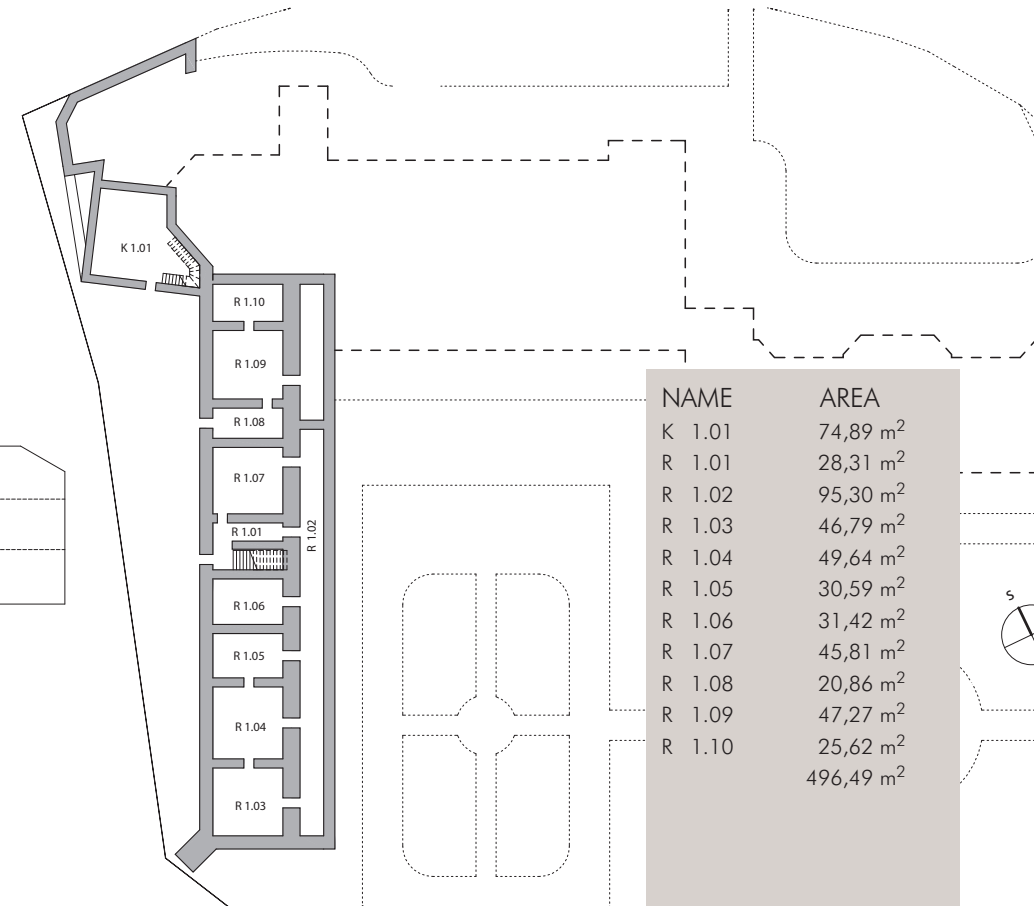
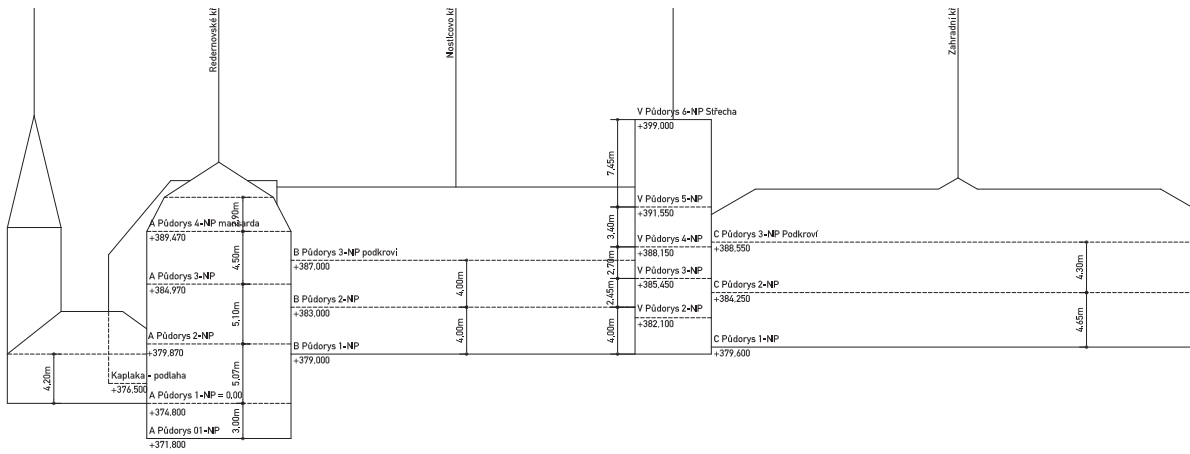
INTERIORS
OF CHÂTEAU LIBREC



GROUND PLAN

ELEVATION LEGEND

1. ELEVATION



| NAME | AREA |
|--------|-----------------------|
| K 1.01 | 74,89 m ² |
| R 1.01 | 28,31 m ² |
| R 1.02 | 95,30 m ² |
| R 1.03 | 46,79 m ² |
| R 1.04 | 49,64 m ² |
| R 1.05 | 30,59 m ² |
| R 1.06 | 31,42 m ² |
| R 1.07 | 45,81 m ² |
| R 1.08 | 20,86 m ² |
| R 1.09 | 47,27 m ² |
| R 1.10 | 25,62 m ² |
| | 496,49 m ² |

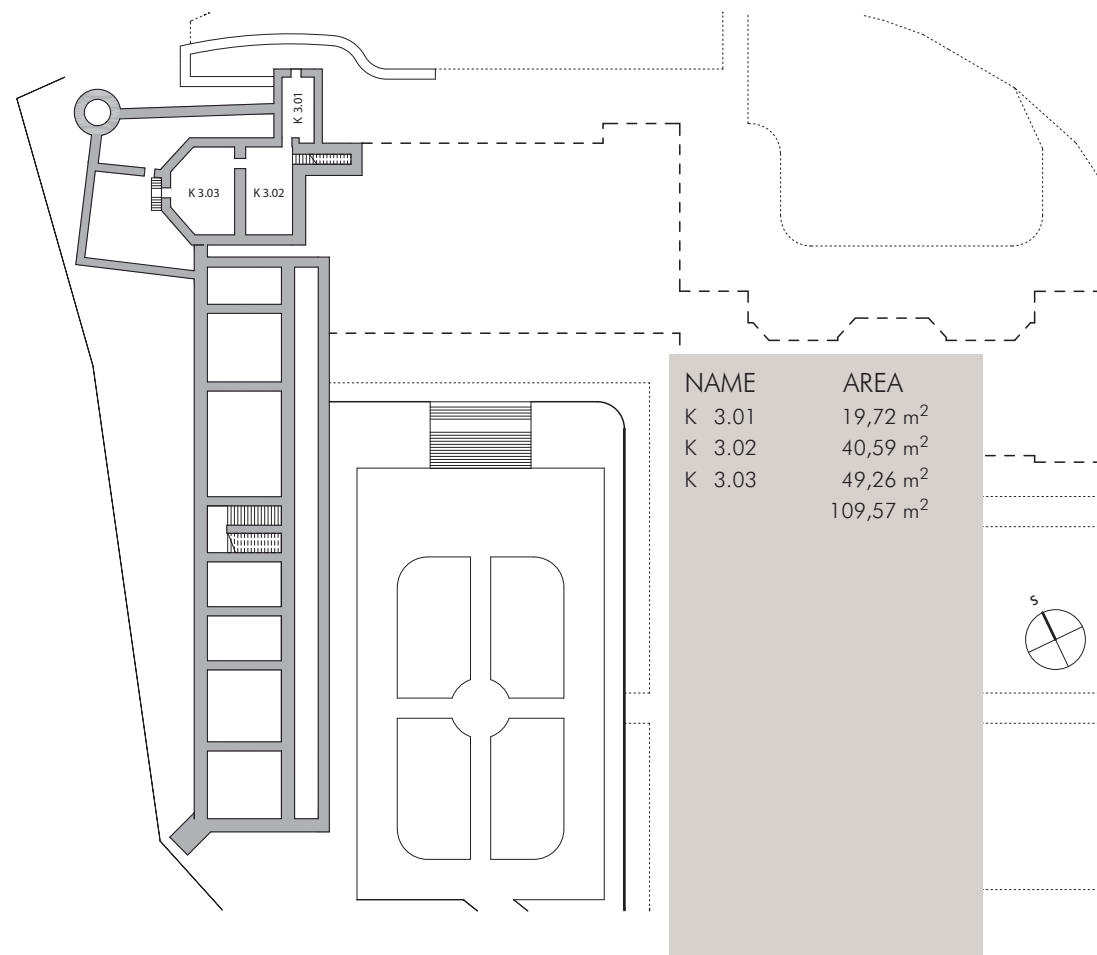
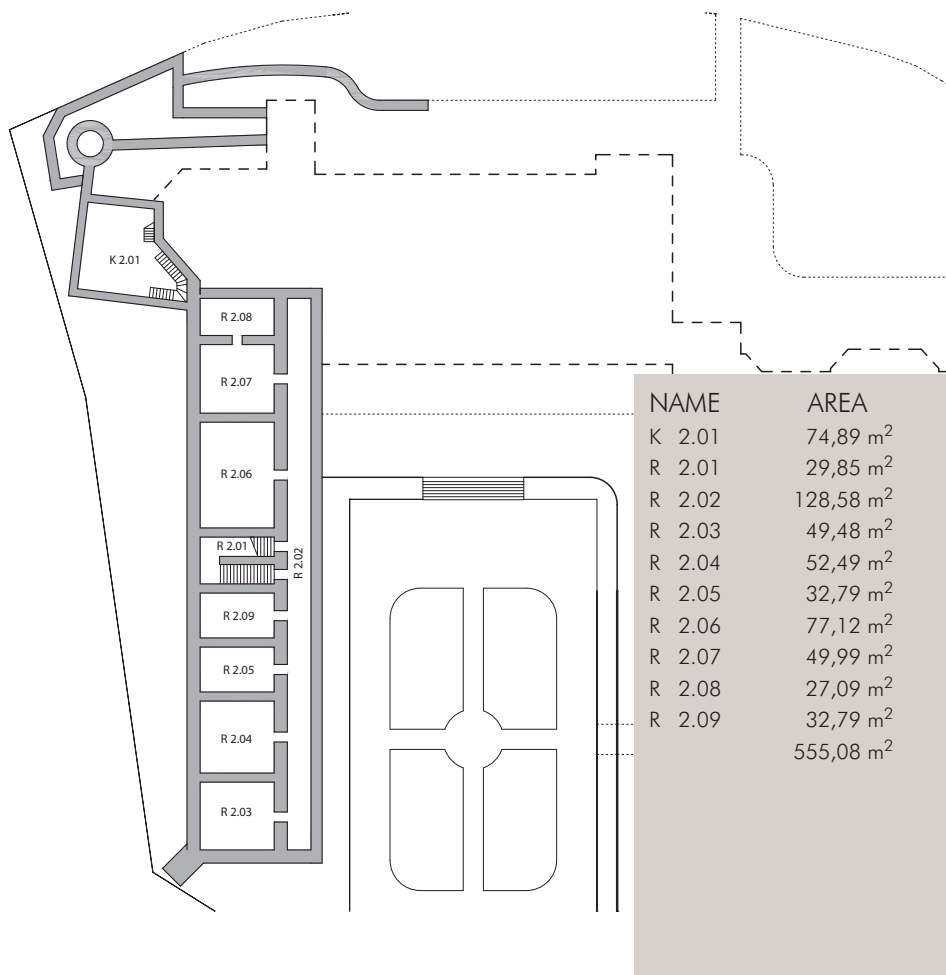
ELEVATION LEGEND

2. ELEVATION



ELEVATION LEGEND

3. ELEVATION



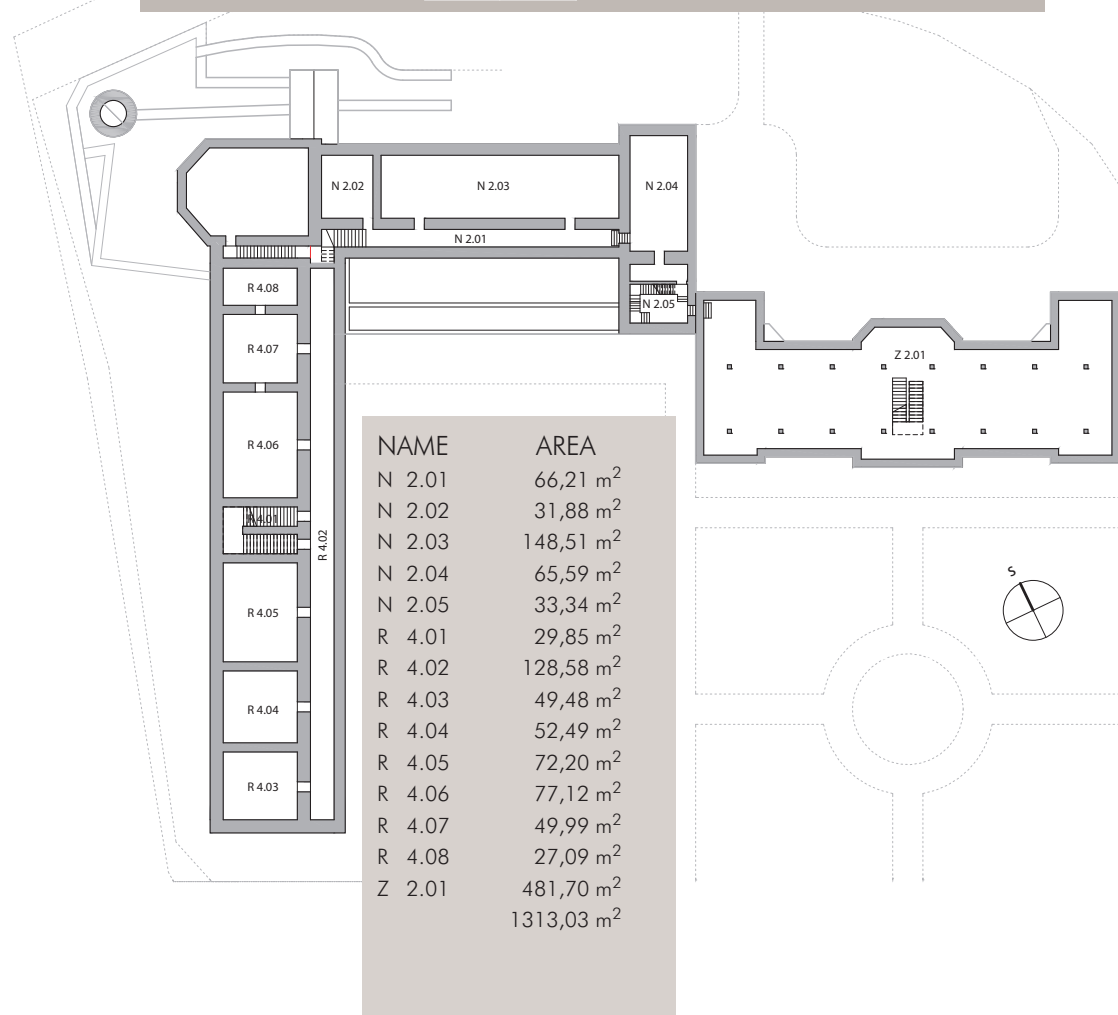
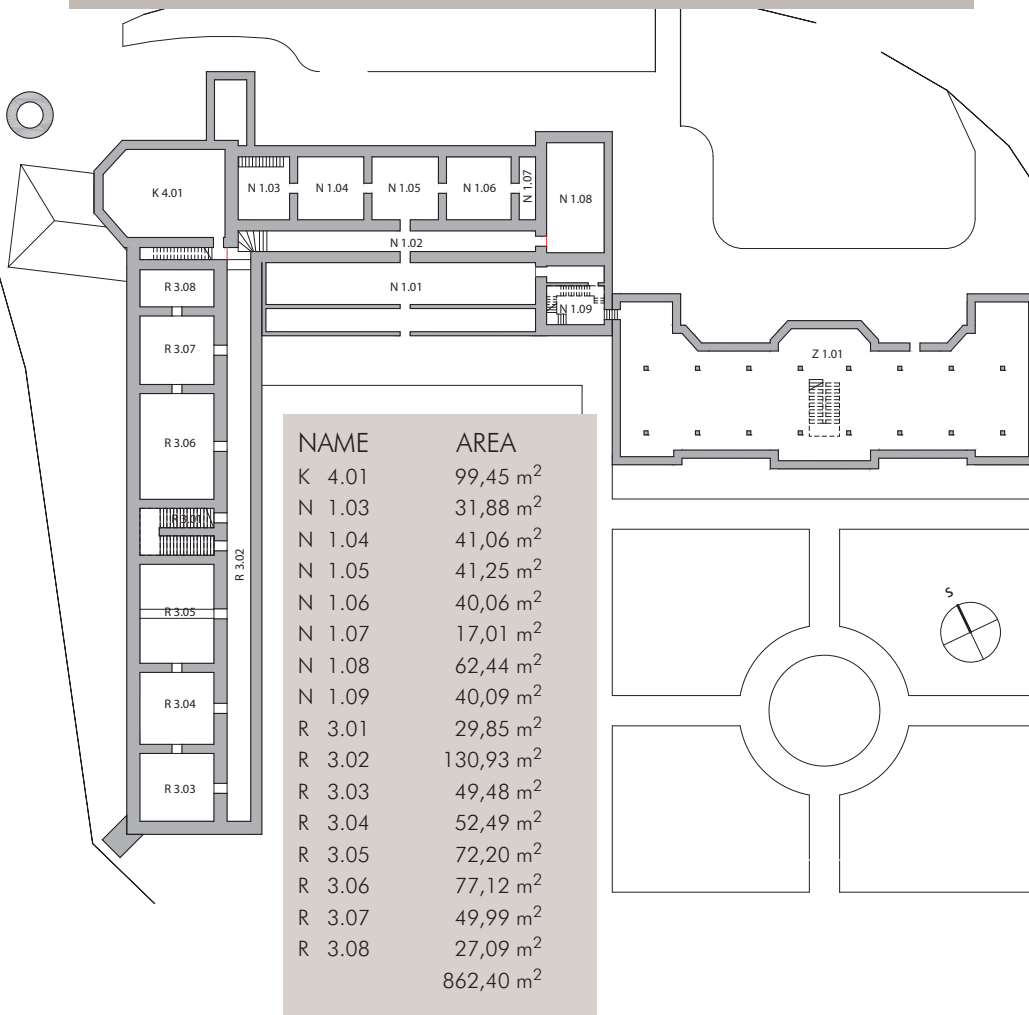
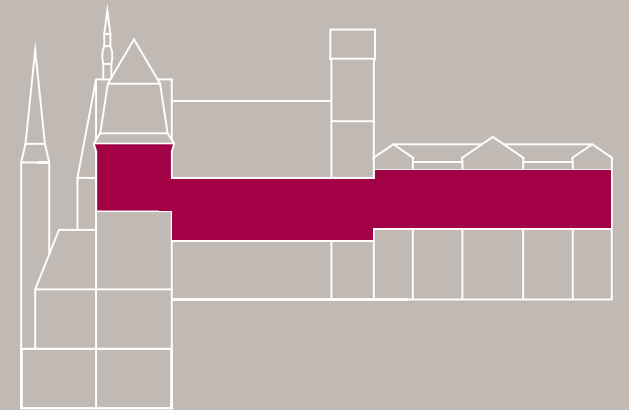
ELEVATION LEGEND

4. ELEVATION



ELEVATION LEGEND

5. ELEVATION



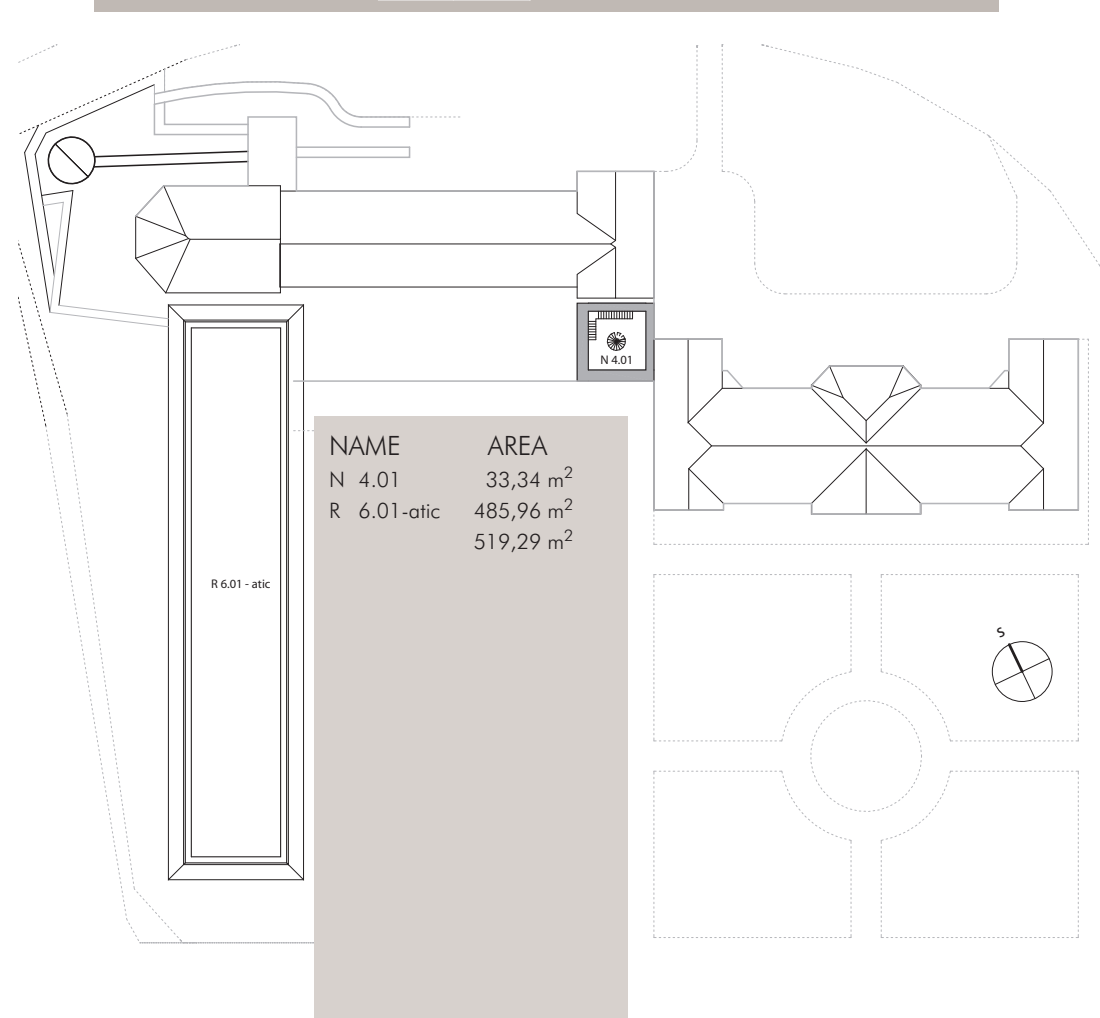
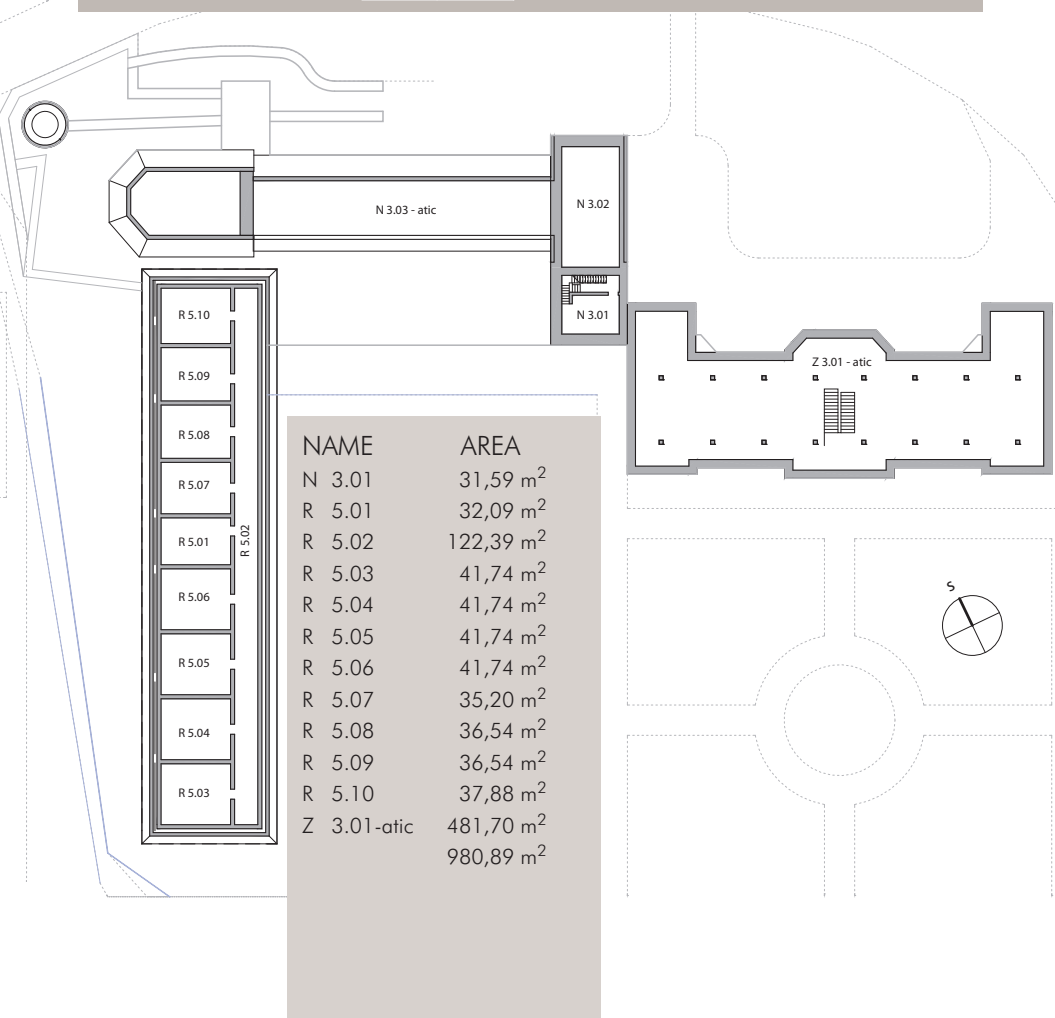
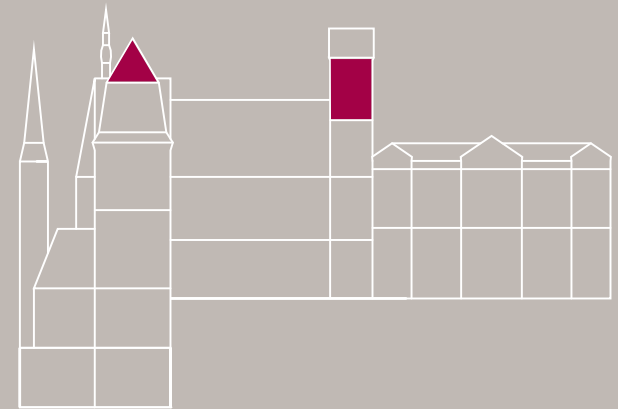
ELEVATION LEGEND

6. ELEVATION



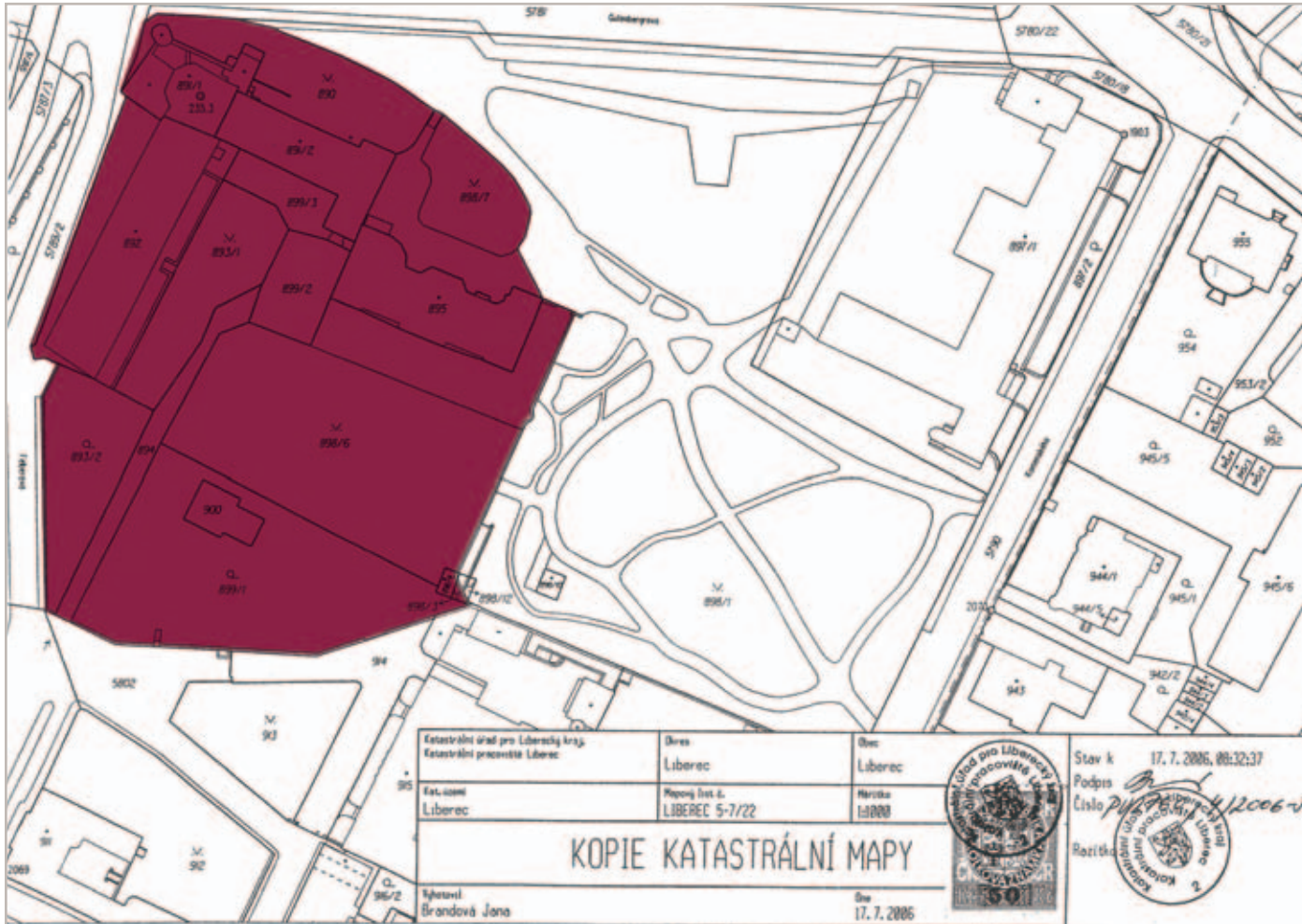
ELEVATION LEGEND

7. ELEVATION





CADASTRAL MAP
OF CHÂTEAU LIBEREC



PLOT NO. AREA m²

| | |
|-------|-------|
| 890 | 762 |
| 898/7 | 889 |
| 899/3 | 227 |
| 893/1 | 703 |
| 899/2 | 322 |
| 899/1 | 2 037 |
| 893/2 | 723 |
| 892 | 1 358 |
| 891/1 | 391 |
| 891/2 | 494 |
| 895 | 633 |
| 898/6 | 3 096 |
| 894 | 339 |
| 900 | 129 |

Total Area of Plots 12 103

ÚSTÍ DEVELOPMENT, s. r. o.
Ing. Lenka Winkelmanová

Address:
Pařížská 127/20
101 00 Prague 1
Czech Republic

Tel: +420 272 744 046
Fax: +420 272 741 390
E-mail: winkelmanova@mei.cz

| Název | Area |
|--------|------------------------|
| N 2.01 | 66,27 m ² |
| N 2.02 | 21,99 m ² |
| N 2.03 | 147,87 m ² |
| N 2.04 | 45,59 m ² |
| R 4.01 | 33,36 m ² |
| R 4.02 | 28,95 m ² |
| R 4.03 | 128,58 m ² |
| R 4.04 | 49,48 m ² |
| R 4.05 | 52,48 m ² |
| R 4.06 | 72,21 m ² |
| R 4.07 | 72,12 m ² |
| R 4.08 | 84,99 m ² |
| R 4.09 | 29,07 m ² |
| R 4.10 | 481,20 m ² |
| R 4.11 | 1923,87 m ² |

